

**SERIOUS about your
FIREWOOD BUSINESS?**

Whitlands Engineering

**AUSTRALIA'S LEADING MANUFACTURING SPECIALISTS OF
LOG SAWS • FIREWOOD PROCESSORS • WOOD SPLITTERS**



600 FIREWOOD PROCESSOR

600X FIREWOOD PROCESSOR

800 LOG SAW

650c CIRCULAR LOG SAW

1050 LOG SAW

900 FIREWOOD PROCESSOR

TROMMEL WOOD CLEANING SOLUTIONS

**+ SUPERAXE WOOD SPLITTERS
AND WOOD HANDLING OPTIONS**



Burders Lane, Whitlands, Victoria 3733
Freecall Australia: 1800 702 701
Freecall New Zealand: 0800 702 701
Tel: (+61) 3 5729 7577
Email: superaxe@superaxe.com.au

www.superaxe.com.au

REX 600 FIREWOOD PROCESSOR



PRODUCTION POSSIBILITIES

Two operators can process in excess of 10m³ per hour. That's up to 80m³ per day.

REX 600 shown here with optional griddle & tray.

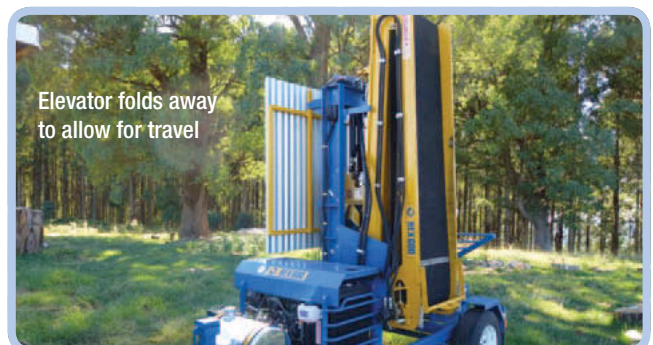
REX 600: COMBINING EFFICIENCY AND MOBILITY

This standalone machine features the efficient multi blade splitting system seen on the REX 600X and the bigger REX 900, built into a compact, towable firewood processor. The REX 600 utilises a powerful hydraulic block lifter with rollers for easy wood handling. The REX 600 is fitted with a 5 meter fold out elevator for easy stockpiling or loading into delivery trucks. This processor can be operated by one or two people; the output estimates shown above are based on two. Designed for commercial operations, the REX 600 will dramatically increase profit margin by increasing production efficiency and reducing labour input.

FEATURES REX 600 and 600X

- ▶ Designed and built in Australia
- ▶ Awesome production – 10m³ plus per hour
- ▶ Easy and safe to operate
- ▶ Excellent sample of split wood
- ▶ Tried and proven splitting principle
- ▶ Roller bench for easy wood handling
- ▶ Two handed control with auto return enhances operator safety
- ▶ Heavy duty construction
- ▶ Minimal maintenance – grease and go
- ▶ 6 months commercial warranty
- ▶ 2 years engine warranty

With hundreds of units in production, the REX 600 has earned its unrivalled reputation.



Elevator folds away to allow for travel

REX 600X FIREWOOD PROCESSOR



PRODUCTION POSSIBILITIES

One operator can process in excess of 10m³ per hour. That's 80m³ + per day.



REX 600X: NEED MORE PRODUCTIVITY?

The REX 600X incorporates the same firewood splitting system as the standard 600, yet features an inbuilt infeed hopper, which holds 3.5m³ of blocked timber. The hopper is filled with blocked firewood with a loader, with the conveyor belt feeding the blocks directly to the operator. The inclusion of the hopper essentially halves labour input – one person using this machine can split and load in excess of 10m³ per hour!

The REX 600X is fitted with the innovative and safe (auto return) double handed control system and easily accessed conveyor controls.

The standard elevator fitted to the 600X is 5m long and is fitted with a griddle to sort the fines and chips out of the wood.

The REX 600X can also be fitted out with a registration kit for safe & legal towing.

Options: REX 600X

- Longer 6m Elevator with Griddle



SPECIFICATIONS REX 600 and 600X

- ▶ Maximum block size: 900mm diameter x 450mm high
- ▶ Average 6 second cycle – 10 cuts / minute
- ▶ 4.5" Ram – 3" rod (26 Ton)
- ▶ 37HP Yanmar 3cyl. liquid cooled diesel engine
- ▶ Economical, 3L fuel consumption per hour
- ▶ 140 L Hydraulic Oil Tank
- ▶ 15" Landcruiser wheels with 1400kg hub/stub axles
- ▶ 5.0 meter fold out elevator with rough top belt (600)
- ▶ 5.0 meter fold out elevator with griddle (600X)
- ▶ 200kg capacity hydraulic block lifter (600)
- ▶ 3.5m³ infeed hopper (600X)
- ▶ Dimensions L3.6m x W1.8m x H3.2m (600)
- ▶ Dimensions L7.2m x W1.8m x H3.2m (600X)
- ▶ Weight: 1800kg (600) or 3400kg (600X)
- ▶ Electric winch fitted on all models



REX 800 LOG SAW



PRODUCTION POSSIBILITIES

With one operator this docking saw can cut up to 120m³ of logs into blocks per day.



REX 800 LOG SAW: EFFICIENT, HIGH PRODUCTION DOCKING OF FIREWOOD LOGS

This firewood docking saw is a very productive hydraulic drive chain saw capable of cutting up to 800mm diameter logs.

The unique log infeed pusher system handles all logs (within dimension) effectively making the Log Saw 800 extremely efficient – with low running costs, minimal labour input and high production output. This machine is designed to work in conjunction with the REX600X or 900 Firewood Processor feeding blocks directly into the hopper or to stockpile blocks or feed directly into trucks.



FEATURES REX 800 Log Saw

- ▶ Designed and built in Australia
- ▶ Can cut logs up to 800mm diameter
- ▶ Can handle logs from 1.5m to 6.0m length
- ▶ Large live log deck with three chains includes a log stop/roll and log deck lift. Log increment system for consistent block length
- ▶ Simple hydraulic controls with minimal electronics
- ▶ Large volume unstressed hydraulic system
- ▶ Quality cast iron Permco hydraulic pump
- ▶ Quality bent axis hydraulic drive saw motor
- ▶ Easy sawdust collection
- ▶ Fully self-contained and portable
- ▶ Bench mounted chain sharpener

SPECIFICATIONS REX 800 Log Saw

- ▶ Yanmar 55hp 4TNV84T turbo, 4 cyl liquid cooled diesel engine
- ▶ 3/4 pitch harvester chain on 43" bar
- ▶ Automatic chain oiling
- ▶ 10x15 Ag wheels on dual 2800kg axles
- ▶ Dimensions: Length = 7.5m; Width: work = 4.5m;
- ▶ Width travel = 2.4m; Height = 3.1m;
- ▶ Weight = 4500kg with block conveyor
- ▶ Block Conveyor = 5mtrs
- ▶ Conveyor (as pictured) is designed to load firewood processor (600X), load trucks or to stock pile blocks for later processing

REX 650c CIRCULAR LOG SAW



PRODUCTION POSSIBILITIES

With one operator this docking saw can cut up to 150m³ of logs into blocks per day.



TAKE YOUR BUSINESS TO THE NEXT LEVEL

The circular saw completes the ultimate package available for firewood businesses looking to take it to the next level.

This machine performs extremely well on a wide range of logs – especially dirty, dry, bent logs, or those which have various flaws such as rot in the centre.

The 28 tooth x 1.5 meter diameter Tungsten tip blade is driven by a fuel efficient 70hp Yanmar 4TNV98 diesel engine – cycle times on average 10 – 12 cuts per minute for 400 – 500mm logs.

This model is designed to handle multiple logs up to 4 meters long incorporating a double log clamp and high back log pusher.



Electric powered diamond wheel grinder for easy accurate on the job saw blade sharpening.

FEATURES REX 650c Log Saw

- ▶ Designed and built in Australia
- ▶ Highly productive with low maintenance
- ▶ Faster cutting – up to 12 t/hour
- ▶ Compact and portable design
- ▶ Handles most bent logs capably
- ▶ Cuts dirty and/or dry logs effectively
- ▶ Reliable and simple hydraulic system with minimal electronics
- ▶ Proven log pusher and log increment system for reliable and controlled log infeed
- ▶ Three strand log deck @ 2.2m wide with hydraulic drive & log roll feature
- ▶ Log deck lift to enable on site mobility
- ▶ Sawdust chute contains and collects sawdust
- ▶ Simple 240v “On Saw” sharpening system
- ▶ 5m block conveyor to load firewood processor, load trucks or to stockpile blocks

SPECIFICATIONS REX 650c Log Saw

- ▶ Will cut up to 650mm diameter logs
- ▶ Will handle logs 1.5 – 6.5 meters long
- ▶ 28 tooth x 1520mm diameter Tungsten tip blade
- ▶ 70 hp Yanmar 4TNV98 diesel engine
- ▶ Cast iron Permco hydraulic pumps
- ▶ Quality bent axis saw motor
- ▶ Weight 5.0 t with block conveyor attached
- ▶ Length 7.5m or 12.5m with block conveyor attached
- ▶ Width 2.4m (travel) 4.8m (Work)
- ▶ Height 3.1m

REX 1050 LOG SAW



PRODUCTION POSSIBILITIES

One operator is capable of processing in excess of 150-200m³ of logs per day.



REX 1050 LOG SAW

The REX 1050 Log Saw is designed as a stand-alone unit or to work in conjunction with the REX 900 Processor. It will efficiently cut logs into blocks ready for processing into split firewood. As a one person operation this machine will produce as much block firewood as three to four people on chainsaws.

The REX 1050 Log Saw is a fully self-contained unit, with a large log deck and infeed trough feeding logs into the cutting head. The 48" chain saw bar is powered directly from the 50hp Deutz diesel engine via a drive shaft/pulley system.

Blocked timber is carried away via the 5m conveyer for splitting (REX 900) or stockpiling. Sawdust is removed by a 4.2m sawdust conveyer.

Designed with an over specified hydraulic system, and built with off the shelf components (and minimal electronics), the REX 1050 Log Saw will give thousands of hours of reliable operation.

The REX 1050 Log Saw will reduce your labour costs and increase your productivity.

FEATURES REX 1050 Log Saw

- ▶ Designed and built in Australia
- ▶ Similar running costs to one chainsaw: 3 – 4 x output
- ▶ Red eye increment system for consistent block length
- ▶ Large Log Deck with log stop & roll control
- ▶ 4.2m Saw dust conveyor for removal and easy disposal of saw dust
- ▶ 5m Outfeed block conveyor – designed to feed blocks directly to REX Processor or stockpile or to load trucks
- ▶ Fully self-contained and portable
- ▶ Safe and easy to use, with low noise output

SPECIFICATIONS REX 1050 Log Saw

- ▶ Will cut logs up to 1050mm in diameter
- ▶ Chain bar direct driven by 50hp Deutz diesel engine
- ▶ Fuel consumption 3L/hr
- ▶ 3/4 harvester chain on 48" bar
- ▶ Large 'live' log deck (3.5m) will handle logs from 1.5m up to 7m long
- ▶ Automatic chain oiler
- ▶ Travel specs: L8000; W2400; H3600
- ▶ Working Dimensions: L13m x W7m x H2.5m
- ▶ Weight: 6000kg

REX 900 FIREWOOD PROCESSOR



PRODUCTION POSSIBILITIES

One operator can produce up to 15m³ hour/120m³ per day! That's 600m³ per week!



REX 900 FIREWOOD PROCESSOR – THE BENCHMARK FOR BULK PROCESSING

The design of the REX 900 Firewood Processor has revolutionised the industry – guaranteeing very high output with very low overheads.

Designed and built in Australia, the REX 900 has a proven reputation for good design, efficiency & reliability. Powered by a fuel efficient Deutz engine, the REX 900 will split and load up to 15m³ of the toughest Australian hardwood per hour, with only one operator.

The REX 900 features an over specified hydraulic system, built with off the shelf components. Since the first prototype in 2003 it has earned a reputation for reliability with almost 150 units in use across Australia and New Zealand – most with thousands of hours of reliable operation.

FEATURES REX 900

- ▶ Excellent sample of split wood
- ▶ Tried and proven splitting principle
- ▶ Heavy duty construction
- ▶ Fully self-contained and portable
- ▶ Minimal maintenance

SPECIFICATIONS REX 900

- ▶ Maximum block size: 900mm diameter x 450mm high
- ▶ Large capacity hopper holds up to 4m³ of blocks
- ▶ 9.5m elevator with rough top belt and griddle
- ▶ Automatic cycling of blade with 5 second cycle (31 ton)
- ▶ 50hp Deutz diesel engine, fuel consumption 3 ltr/hr
- ▶ 350L Hydraulic Oil Tank
- ▶ Dimensions: L8.8m (18.3m with elevator) x W2.35m x H3m
- ▶ Weight: 5000kg



REX TROMMEL WOOD CLEANING SOLUTIONS



ADD-ON OPTIONS TO YOUR BULK PROCESSING SYSTEM

The Trommel is designed as an add-on to a bulk processing system. Cleaning the wood is the last step in preparation for bulk retail sale. The Trommel will efficiently remove all fines (dirt, gravel, wood chips & splinters) through the fine screen and most of the kindling and smaller pieces of wood through the coarse screen.

For wood yards this means the wood is cleaner, more saleable and results in more accurate weight measurement. With a constantly loaded infeed hopper, the capacity of this machine is estimated in excess of 60m³ per hour. Talk with our team about customising a trommel to suit your requirements.



The Complete System TROMMEL 'with the lot'

- ▶ 3.5m³ Infeed hopper
- ▶ 3.2m x 1.2m Trommel Drum
- ▶ 6m Rubbish Conveyor/s
- ▶ 9.5m Outfeed Conveyor
- ▶ 24hp Yanmar Diesel Power Pack

All mounted on a dual axle mobile chassis

The Trommel can be customised to an existing firewood handling system, or it can be combined as a hopper/trommel or hopper/trommel/elevator configuration for maximum efficiency.

60m³
per hour



REX TROMMEL WOOD CLEANING SOLUTIONS



TROMMEL DRUM OPTIONS

- ▶ Trommel Drum – Proven extra heavy duty construction 3.2m long, 1.2m diameter.
- ▶ Choice of single or two grade cleaning.
- ▶ Choice of gaps (20mm > < 110mm) between trommel bars to best suit your application (Fines, dirt, grit, kindling, small wood).
- ▶ Variable Speed hydraulic drive – runs on 4 solid wheels in a self-contained frame with side guarding.

3.5m³ INFEED HOPPER SPECIFICATIONS

- ▶ Controlled bulk feed into trommel drum.
- ▶ Hydraulic drive variable speed moving floor.

MOUNTING CONFIGURATIONS/CHASSIS

- ▶ Static System: Height Adjustable, 4 or 6 Leg Stand – ideal for cleaning and loading directly into delivery vehicles.
- ▶ Mobile System: Mounted on a single or dual axle chassis – Ideal for working in large wood yard operation to clean and stockpile fire wood or to load directly to delivery vehicles. Standard hydraulic leg jacks for easy set up on larger units.

OUTFEED ELEVATOR

- ▶ 6m or 9.5m long, with rough top belt.
- ▶ Swings 5m side to side (minimum 12 degrees elevation; maximum 30 degrees).
- ▶ Hand winch (6m) or hydraulic winch (9.5m) to raise and lower.

TRANSFER CONVEYORS

- ▶ 6m options with crescent moon belts to remove waste and/or kindling away from machine for easy collection into bulk bags or bins.

POWER PACKS

- ▶ 18Hp Petrol.
- ▶ 24Hp 3 cylinder Yanmar Diesel.
- ▶ Single or double pumps and multi-function valving and detents as required.
- ▶ All with hydraulic oil tanks and fuel tanks to suit the application.

STATIC MOUNT SYSTEM

Shown here with height adjustable legs, dual grade drum, twin rubbish conveyors and 6m outfeed elevator.



MOBILE UNIT

Shown here with hopper feed, single grade drum (drops rubbish on ground), 6m outfeed elevator and 18hp petrol power pack.



SINGLE GRADE DRUM ON ROLLER CARRIAGE

Available to retrofit into your own system.



SUPERAXE

WOOD SPLITTER

ALL MODELS COVERED BY A TWO YEAR FRAME WARRANTY



SUPERAXE WS 150

The WS 150 is suited to domestic, farm and hire operations. The WS 150 features fast cycle times, robust construction, a large work bench and a 150kg capacity, cable operated block lifter, and a two-hand control system. A Honda 9hp engine is fitted as standard, but a 6hp engine is also available. The Honda 9hp engine delivers an impressive 21 tonnes of splitting power and a 7 second cycle time. This model can be optioned with a road towing kit.



SUPERAXE WS 3150

The Superaxe WS 3150 is our mid-sized block splitter, and is the perfect solution for splitting larger volumes of firewood for farms, hire, or small commercial operations. The WS 3150 features fast cycle times, robust construction, a larger work bench, a 200kg capacity hydraulic block lifter, and a two-hand control system. A Honda 9hp engine is fitted as standard (Honda 13hp also available) delivering an impressive 21 tonnes of splitting power and a 6.5 second cycle time with auto-return. The WS 3150 can be optioned with a 3.6m fold-out elevator and a road towing kit.



SUPERAXE WS 4150

The WS 4150 is suitable for domestic use and semi-commercial operations. The cutting head, larger than our smaller models, is offset to better utilise bench space and to make wood handling easier for the operator. With 26 Tonnes of splitting power and fast cycle times, this machine can produce up to 6m³ per hour. The WS 4150 comes standard with an electric start engine, 200kg capacity hydraulic block lifter, road registration kit, and can be optioned with a 3.6m outfeed elevator that can be folded for transport. "T" blade and "X" blade options are also available on this model.



WOOD HANDLING OPTIONS

HOPPERS

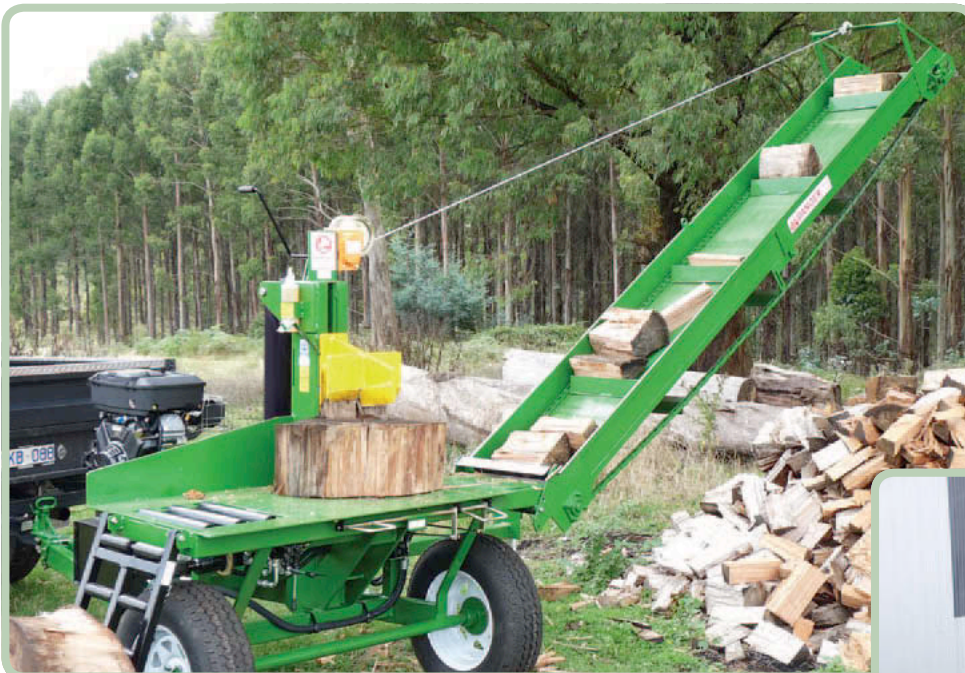
Infeed hoppers have the potential to more than double splitting production by reducing wood handling. The hopper is filled with a loader, which means the operator spends less time away from the splitter. This 4m³ hopper feeds timber onto the wood splitter bench for splitting, and is powered by the hydraulics on the wood splitter.



ELEVATORS

Load your split wood directly into your truck or trailer and save double handling. This 3.6m elevator fits Superaxe models WS3150 & WS4150. The elevator will reach up to three meters and folds for travelling. It utilises an electric or manual winch mechanism to fold and unfold the elevator. Setup takes only a few minutes.

Below: WS 4150 3.6m elevator folded and secured for transport.



FREE STANDING ELEVATORS

Ideal for stockpiling, 6m, 9.5m, 13m & 16m free standing elevators give more height and allow for easy positioning; with the 9.5m & 13m options able to load high sided trucks. There are options to power the elevator by a 6hp power pack or by the hydraulics on the wood splitter. Units are yard towable.

Whitlands Engineering

THE NAME YOU CAN TRUST FOR QUALITY, RELIABILITY AND INNOVATION

Burders Lane, Whitlands, Victoria 3733
Freecall Australia: 1800 702 701
Freecall New Zealand: 0800 702 701
Tel: (+61) 3 5729 7577
Email: superaxe@superaxe.com.au

THE INDUSTRY LEADER

Whitlands Engineering is Australia's leading specialist manufacturer of firewood processors and wood splitters for all commercial, semi-commercial, hire, farm & domestic applications. We have been designing and manufacturing machinery for over 30 years and our products have been proven in the market time and time again because our design principle is simple: ergonomic, productive, safe, efficient & built to last.

The REX range of machines are covered by a six month commercial warranty and we provide comprehensive after sale support where required.

AUSTRALIAN MADE, FAMILY OWNED

Located in North East Victoria, Australia, we are proud of our highly skilled workforce and commitment to continuous improvement. Led by head designer and CEO David Burder, the company has progressively developed the SUPERAXE and REX brands for distribution across Australia and New Zealand.

With 31 full time staff, every machine is built in our workshop in Whitlands, Victoria using Australian made components where possible. By manufacturing locally we maintain the highest quality control standards, every machine is tested onsite and covered with a power pack and machine warranty.



DESIGNED FOR THE BOTTOM LINE

Whitlands Engineering is committed to innovative design that guarantees higher profit and lower labour inputs. The REX range of machinery has been designed in conjunction with the firewood industry, and continuously improved upon for over 22 years as we have refined each machine to maximise productivity and cut labour requirements. We're proud of the innovative safety features which keep operators safe without compromising output.

HIGH QUALITY COMPONENTS AND POWER PACKS

Complementing the high standard of the REX machines is the use of world renowned Yanmar and Duetz diesel engines guaranteeing reliability, longevity and fuel efficiency for the life of the machine. These are coupled with Permco and Galtech pumps that will provide thousands of hours of trouble free operation.

DON'T JUST TAKE OUR WORD THOUGH

As part of our commitment to continuous improvement we collect feedback from our customers. Take Joe in country NSW for example who said that his REX 1050 Log Saw 'cuts two B-doubles a day – 6 days a week – the productivity is amazing. The blokes in the office know their stuff too'.

SPEAK TO US ABOUT YOUR REQUIREMENTS

Here at Whitlands Engineering, the people who design the machinery are on hand to talk you through the details.

Just call our office on 1800 702 701 or email superaxe@superaxe.com.au

www.superaxe.com.au